

# IFAD's Development Effectiveness

HIGHLIGHTS FROM THE 2017 RIDE\*

## Outreach of IFAD-supported projects

### Rural financial services

**16.1 million**  
voluntary savers



**7.7 million**  
active borrowers



### Natural resource management

**3 million**  
hectares of common-property-resource land under improved management practices

**57,000**  
hectares under constructed/rehabilitated irrigation schemes

### Marketing

**13,690**  
kilometres of roads constructed/rehabilitated

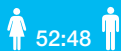
**5,191**  
marketing facilities constructed/rehabilitated

### Microenterprise

**91,240**  
enterprises accessing business promotion services

### Agricultural technologies

**2.5 million**  
people trained in crop and livestock production practices/technologies



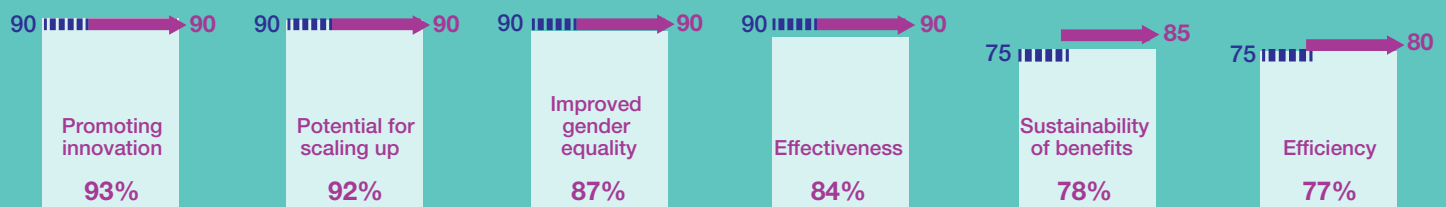
### Climate change adaptation

**1.5 million**  
poor smallholder household members supported in coping with the effects of climate change



## Selected outcome indicators

### Project performance is encouraging but challenges persist



(Percentage of projects rated moderately satisfactory or better at completion)

■ 2014-2016

▒▒▒▒ IFAD9 target

➔ IFAD10 target

## Key messages from 2017 RIDE

**1** IFAD has already surpassed or is close to meeting most project outcome targets; efficiency, natural resource management and sustainability show persistent challenges.

**2** The increased proportion of projects in fragile situations is a challenge for results delivery, calling for differentiated country-level approaches.

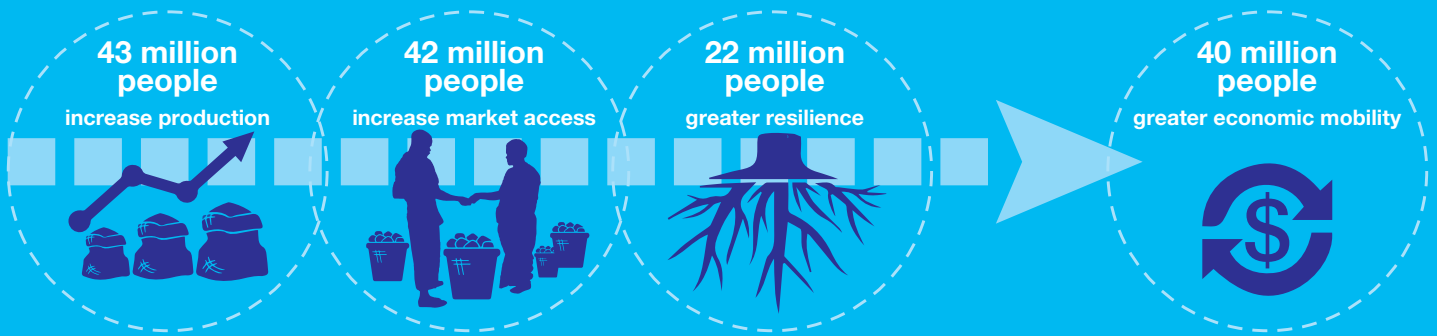
**3** Partnerships, policy dialogue, knowledge management and SSTC are key to scaling up and delivering sustainable results.

female:male ratio of people receiving services

\*Download the full Report on IFAD's Development Effectiveness (RIDE) at <https://webapps.ifad.org/members/eb/121/docs/EB-2017-121-R-10-Rev-1.pdf>

Outreach indicators measure the cumulative number of people receiving services from all ongoing projects. While the different indicators only report the number of participants in a project activity, the total outreach figure includes all direct beneficiaries and members of the same household. Figures reported are for 2016.

## Ongoing impact assessment targets (2016-2018)



In IFAD11 (2019-2021), impact will be measured around the same four dimensions above. Impact target levels will be set during the Eleventh Replenishment consultation.

## Maximizing impact and increasing development effectiveness in IFAD11 (2019-2021)

### REVISED IFAD11 BUSINESS MODEL



#### RESOURCE MOBILIZATION

- Broaden range of funding sources
- Enhance cofinancing
- Increase private sector finance



#### RESOURCE ALLOCATION

- Increase country and project selectivity
- Focus ODA resources on poor and fragile contexts
- Sharpen targeting tools to reach vulnerable groups



#### RESOURCE UTILIZATION

- Increase decentralization
- Accelerate implementation through increased flexibility
- Broaden product offer
- Enhance tailoring to country context



#### RESOURCE TRANSFORMATION

- Embrace a culture of results
- Increase transparency
- Improve business processes and value for money

To strengthen its development effectiveness, IFAD is consolidating its decentralization approach by:



Establishment of regional hubs with a critical mass of IFAD staff and enhanced technical capacity



Expansion of country director role; sharper focus on partnerships and policy engagement



Enhanced delegation of authority to field offices for agile country programme implementation



Investing in rural people

International Fund for Agricultural Development  
Via Paolo di Dono, 44 - 00142 Rome, Italy  
Tel: +39 06 54591 - Fax: +39 06 5043463  
Email: ifad@ifad.org  
www.ifad.org

October 2017

IFAD is an international financial institution and a specialized United Nations agency dedicated to eradicating poverty and hunger in rural areas of developing countries.

### CONTACTS

**Maria Soledad Marco**  
Programming and Resource Officer  
Tel: +39 06 54592654  
Email: m.marco@ifad.org

**Jakob Tuborgh**  
Strategic Planning Specialist  
Tel: +39 06 54592469  
Email: j.tuborgh@ifad.org