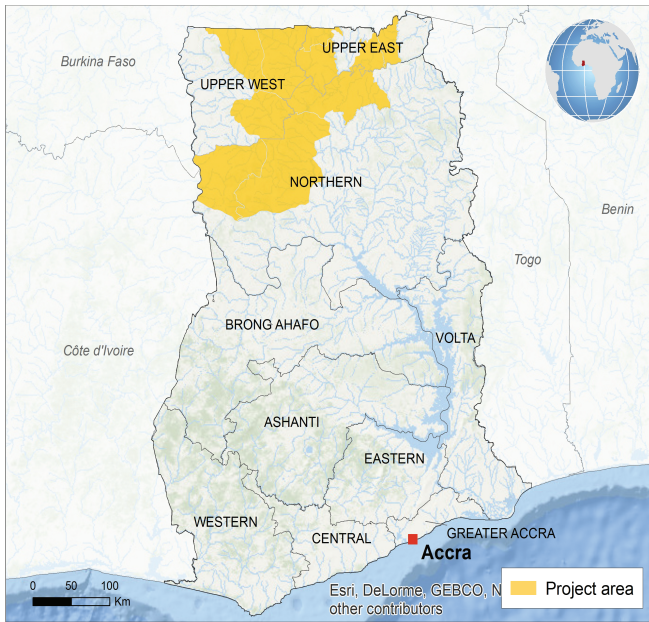


# GHANA

## Sustainable Land and Water Management Project



### Integrated Approach Programme

The Integrated Approach Programme on food security in Sub-Saharan Africa targets agro-ecological systems where the need to enhance food security is directly linked to opportunities for generating local and global environmental benefits. Being an integral part of the 12 country regional programme, the Sustainable Land and Water project will contribute to the collective impact of this programme, which is intended to inform approaches to food security in the drylands of sub-Saharan Africa towards win-win solutions between food production and maintaining ecosystem services in the face of anticipated climate shocks.



## OBJECTIVES

The Sustainable and Water Land Management Project is currently financed by the GEF and in-kind contribution from the Government of Ghana. The project implementation started in May 2011, with a first additional financing in May 2014. The proposed child IAP project will be considered as an Additional Financing, building on the enabling existing systems, structures, and capacities developed under the SLWMP to improve food security using a landscape/ecosystem approach.

GEF Agency	World Bank
GEF Grant	US \$12.76M
Co-Financing	US \$22M
Status	CEO Endorsed

## CONTEXT

The project is seeking to scale up activities to facilitate implementation on a larger geographic scale and expand the range of sustainable land and water management interventions in Northern Ghana. The activities are based on the landscape approach in Upper Ghana's savanna, which is characterized by vulnerability, low climate resilience, and high poverty. The project, builds on previous GEF investments in the region, which has benefited over 24,000 people and helped to reinforce national capacities in spatial planning and implement local platforms at watershed and community levels. In addition, Community Resource Management Areas

were designed and managed for sustainable natural resource management in wildlife Corridors and the protection of the Gbele Resource Reserve was reinforced with management planning and training activities. The current project under the IAP Program is intended to help the government harness existing systems, structures, and capacities developed to further improve food security using a landscape/ecosystem.

# GLOBAL ENVIRONMENTAL BENEFITS

Land under integrated and sustainable management (M ha.)	1,000,000
GHG emissions avoided or reduced (MtCO <sub>2</sub> e)	45
Genetic diversity of crops and animals maintained or increased (%)	TBD
Land cover (increase, %)	TBD

## KEY COMPONENTS

The IAP support is structured around the following components in line with the IAP program framework: (i) integrated spatial planning; (ii) land and water management (systems, capacity, and monitoring for sustainable land and water management (SLWM)); (iii) implementation of SLWM in micro-watersheds (sub-projects), including national SLWM and Payment for Environmental Services monitoring, and management of riparian and other biological corridors.

## STAKEHOLDERS ENGAGED

Preparation of the project included extensive consultations with a wide range of stakeholders and it continues during implementation. The project is implemented by the Ministry of Environment, Science, Technology and Innovation (the project coordinating entity) jointly with the Ministry of Food and Agriculture, Environmental Protection Agency, Wildlife Division (of the Forestry Commission) and Forest Services Division (of the Forestry Commission). At the national level, the project engages the National Sustainable Land Management Committee which is responsible for providing overall guidance for implementation of the Ghana Strategic Investment Framework [for SLM] funded through the TerrAfrica Program. Target beneficiaries to be engaged is expected to increase from a baseline of about 30,000 in 2016 to 60,000 in 2020, with women making up 40% of this group.

## INNOVATIVENESS

The Ghana SLWM project supports a comprehensive landscape approach to sustainable land and watershed management at the community level with planning activities

management of ecosystems at the landscape level with improved food security and poverty reduction at community level. This is expected to generate triple-win situations that combine agricultural productivity increases with enhancement of ecosystem services and improvements of livelihoods, incomes, and food security. Significantly, the project combines elements of sustainability through supporting post-harvest management improvements as part of the value chain work and further reducing pressures on common pool resources by providing additional support to non-destructive uses of forests, including through use of the NTFPs. Strategic planning, government commitment and long term engagement in natural resources management is providing a strong basis for innovation in Ghana.

## EXPECTED IMPACTS

### Capacity Building for Integrated Spatial Planning.

Integrated spatial development framework produced for Northern Savannah zone.

### Land and Water Management

244 communities with community watershed development plans

1,060 ha. within target forest reserves reforested

72,716 ha. brought under sustainable management plans

347 community governance structures established, trained and operational.

### Project Management and Coordination

Monitoring and evaluation system provides required report and data in a timely manner.

## Programme Contacts

Eric Patrick  
Adaptation Specialist  
Via Paolo di Dono 44  
00142  
Rome, Italy  
Tel: +39 0654592488  
e.patrick@ifad.org

Mohamed Bakarr  
Lead Environmental  
Specialist  
1818 H Street, NW,  
Mail Stop N8-800  
Washington, DC 20433  
USA  
Tel: +1 202 458-8890  
mbakarr@thegef.org